

Greyseal 6690 Joint Seal and Crack Filler:

- Grey, hot-applied material for joints and cracks in concrete pavements
- Build America Buy America Act compliant
- Meets ASTM D6690 Hot-Applied Joint and Crack Sealant Physical Properties Types I and II



Fast open to traffic:
Cures rapidly and is ready for traffic when cool, usually in an hour after application.



No temperature limitations:
Installs in extreme cold or heat so repairs can be made day or night, and year round.



Water-tight and resistant
to UV exposure, deicing salts, bases and organic materials.



Flexible with strong
adhesion values for durable performance in frequent freeze-thaw cycles.

Greyseal 6690

Greyseal 6690 is a grey, hot-applied, single component material used to seal joints and fill cracks in portland cement concrete pavements. Its grey color makes it aesthetically suited for highly-oxidized, asphalt surface crack fill as well. Greyseal 6690 maintains its grey color without the use of detack or curing solvents.

Greyseal 6690 is made from polymer-modified resins, fibers and high-quality fillers. Supplied in meltable bags, it can be heated and applied from standard crack seal kettles.

Packaging: 30 lb/meltable bag (60 bags/pallet)

Typical Truckload: 24 pallets



Greyseal 6690 Installation:

- Areas to be sealed and filled should be clean, dry and free of loose debris or other contaminants that may prevent proper adhesion or cause early adhesion failure. Areas may be widened or cut using routers, sawing equipment, power wire brushing or sand blasting.
- Clean and dry areas using a hot air lance and oil-free, moisture-free compressed air. Surfaces should be inspected for cleanliness and dryness just prior to Greyseal 6690 application.
- Heat Greyseal 6690 material using indirect heating methods: a double boiler or hot oil circulating kettle capable of constant material agitation. Place material, including meltable packaging, in melter. Once the material reaches approximately 380 to 400 °F (193 to 204 °C), apply by method specified.
- Maintain material temperature throughout the application session. Add material to the melter as the application consumes material. Residual material in the melter may be reheated ONCE to apply after initial heating. To reheat, add bags of Greyseal 6690 equal to the amount of product in melter and proceed with application once the heating temperature is achieved.
- Apply Greyseal 6690 by hose, hand-held pour pot or wheeled pour pot in level fill, overband, or other method as specified for the project.

Physical Properties:

Cone Penetration	90 maximum - PASS
Flow	3 mm maximum - PASS
Softening Point	176 °F (80 °C) minimum - PASS
Resilience	60% minimum
Bond -1 °F (-18 °C)	Pass 5 cycles 50% extension
Bond, -20 °F (-29 °C)	Pass 3 cycles 50% extension

Minimum Application Temperature: 380 °F

Maximum Heating Temperature: 400 °F

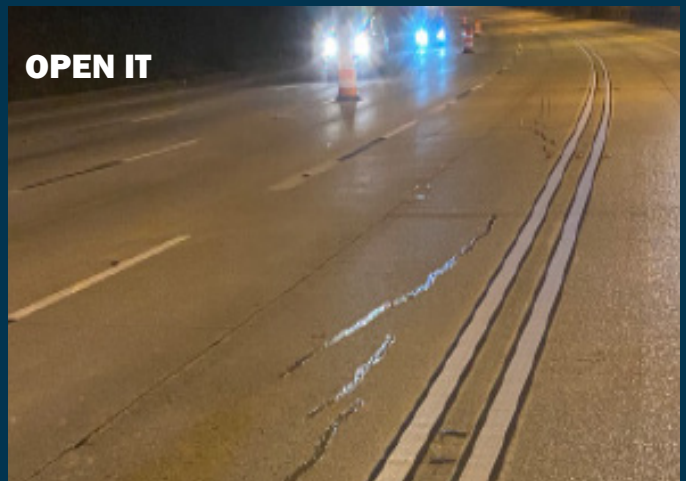
PREP IT



APPLY IT



OPEN IT



Interested in Greyseal 6690? Contact us to schedule a demonstration. We'll install Greyseal 6690 in your prepared pavement to show what an effective preservation solution it is.