

Ecophalt® high-performance, eco-friendly cold patch:

- Asphalt and concrete paved roads, highways and bridge decks
- Pavement repair around drains, manholes and other fixtures
- Golf cart paths, bike lanes and other multi-use pathways
- Parking lots, driveways and commercially-trafficked surfaces



Innovative material:

Special polymers react to environmental moisture creating a strong bond to adjacent pavement.



Environmentally-friendly:

No VOCs in the mix. No heavy equipment needed for installation. Bags minimize packaging waste.



Pack and go material:

Repairs require minimal labor and minimal traffic control for return to traffic in just a few minutes.



All weather installation:

Installs in extreme cold or heat to support a year-round patching program, even in the coldest, wettest months.

Ecophalt

Highway-grade, high-performance patching materials is a cold mix of aggregates, bituminous binder and nanotechnologic additives that react with the environment to form long-term pothole and spall repairs. Packaged in hermetically-sealed bags, Ecophalt is poured into the defect, leveled and hand or mechanically-compacted to form the repair.

Bag: 50 lbs, 0.52 cubic feet coverage rate compacted

Typical Pallet: 49 bags

Typical Truckload: 18 pallets



Ecophalt® high-performance, eco-friendly cold patch:

Open bottom of bag and pour in defect.



Spread to edges, slightly overlapping defect.



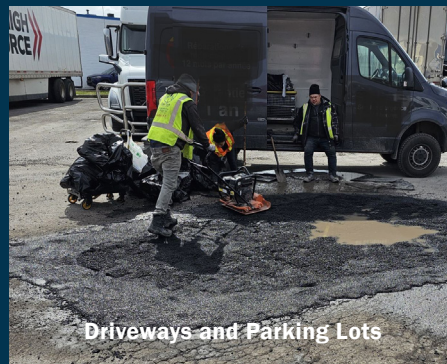
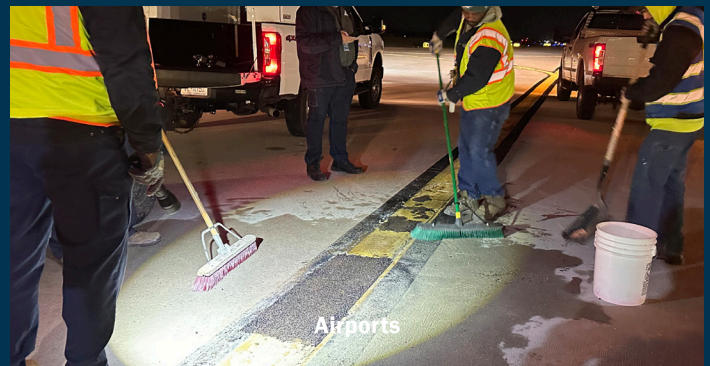
Compact with hand or mechanical tamper.



Open to traffic.



Use Ecophalt for:



Distributed by:

