



Facility Maintenance

Restoration and Repair Solutions for:

- 🏠 Warehouses and Logistics Centers
- 🏭 Manufacturing Campuses
- 🛣️ Travel, Fuel and Service Centers





Nearly four million warehousing, manufacturing and transportation-related companies supply North America with goods and services. Maintaining these facilities is critical to their continued operation. FPT Infrastructure offers a comprehensive portfolio of solutions to protect, restore and sustain these vital assets. While we constantly adapt our products and systems for new applications, our most prevalent solutions are shown below and include:

- » Hot-applied concrete repair materials and asphalt mastic repair materials for spalls, cracks and surface defects
- » Cold-applied polymer sealants and repair mortars for horizontal, vertical and overhead structures
- » Liquid-applied waterproofing, protective coatings and wear surface systems for trafficked areas and structures
- » Methyl methacrylate-based materials for safety, directional and illustrative markings on interior and exterior surfaces
- » Expansion joint systems, control joint fillers and joint header materials

Matacrete Ready Rep
polymer concrete for heavy
load areas, flooring and cold
storage concrete repair

Fibrecrete G mastic repair for
spalls, cracks and defects on
concrete loading surfaces

SAMIscreed mastic for
asphalt repairs

Matacryn Sealer for
crack treatment and
flood coat flooring
restoration

Matacryn waterproofing and
non-slip systems for flooring,
walkways and loading
surfaces

Mataspan foam
joint seals

Greyseal 6690
control joint filler
and crack repair on
concrete surfaces

Matacryn Marking
for safety indicators,
warehouse layout and
parking lanes

Scan for more information
on Facility Maintenance
applications:



Facility Maintenance Solutions

Cracked floors. Spalled concrete loading areas. Slippery ramps and stairs. Inadequate safety and directional markings. Deteriorating parking lots. These are just a few of the assets FPT Infrastructure's product offering can restore. Even more, our systems are compatible and complementary, so we can design solutions specific to the repair and restoration needs of your facility.

Fibrecrete G: hot-applied, flexible material for concrete repair

Repairs corner breaks, transverse and longitudinal cracks and spalls on concrete loading surfaces

- Repairs are ready for traffic in one hour
- Resistant to water intrusion and contaminants
- Flexible repair allows concrete movement without cracking or unseating
- More economical than panel or concrete replacement
- Bulking stone adds stability to deep repairs
- Topping stone adds UV protection and traction
- Meltable packaging for less waste at jobsite
- Year round installation



**Fibrecrete G
crack repair**

Greyseal 6690: hot-applied, grey crack and joint sealant

Used for crack filling in concrete and joint sealing between concrete panels

- Cost-effective alternative to silicone joint sealant
- Water-tight and resistant to UV exposure, deicing salts, and chemicals
- Maintains grey color without detack or curing solvents
- Meltable packaging for less waste at jobsite
- Year round installation

SAMIscreed: hot-applied, flexible mastic for asphalt repair

Repairs cracks larger than 1.5" wide, seam raveling, potholes, spalls and alligator cracking in asphalt

- Repairs are ready for traffic in one hour
- Sealing properties stop water intrusion and extend asphalt surface life
- Minimal surface preparation
- Meltable packaging for less waste at jobsite



**SAMIscreed asphalt
crack repair**

Matacrete Ready Rep: MMA-based, ultra high-strength polymer concrete

Used for structural concrete repair in heavy load areas and cold storage rooms, and for anchoring or setting fixtures in concrete

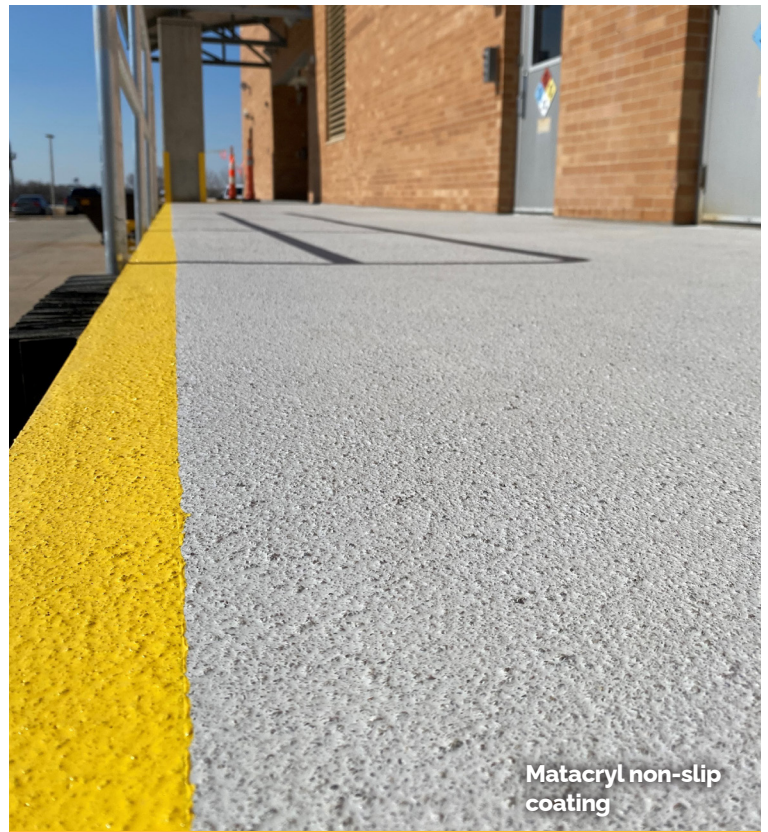
- Repair kit with methyl methacrylate resin binder and dry blend of graded aggregates, powder and initiator
- All temperature installation with one-hour cure
- High compressive strength: 11,000 psi in one hour, 14,000 psi in seven days
- Can be extended with sand or aggregate for full-depth repairs



Matacryl Coatings: waterproofing and non-slip systems

Used for loading zones, ramps, parking areas, multi-use pathways, and other horizontal trafficked surfaces

- Highly flexible waterproofing membranes with exceptional crack bridging properties
- Rapid cure time - 60 minutes or less per layer
- System can be repaired or recoated without full removal
- Protects against chemicals, deicing salts and other harsh contaminants
- Installs at a wide temperature range including below freezing
- System layers are customized to meet project parameters

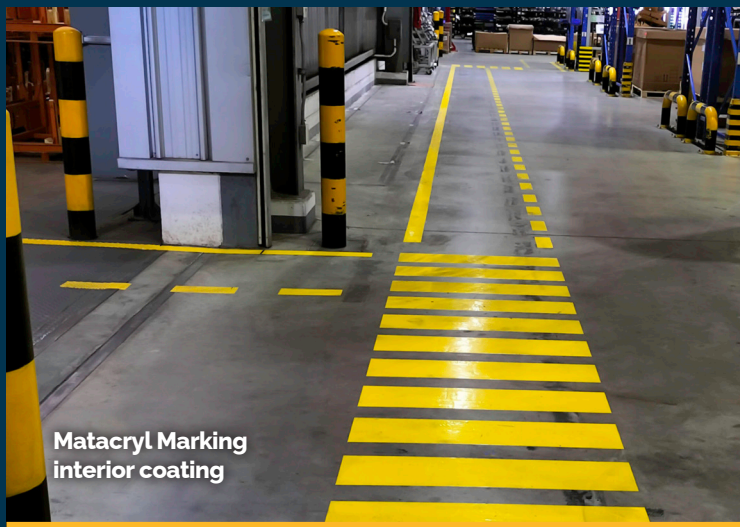




Matacryn Marking: high-visibility coatings

Standard and custom tint coatings for safety indicators, traffic management and other directional markings

- ▶ Tenacious bond between Matacryn Marking and Matacryn waterproofing/non-slip systems
- ▶ Installs at a wide temperature range including below freezing
- ▶ Rapid cure time - 60 minutes or less per layer



Matacryn Marking
interior coating



Matacryn Marking
exterior coating

Matacryn Sealer: concrete healer sealer and crack treatment

Used for sealing hairline and micro-cracking in concrete

- ▶ May be applied as a flood coat or selective crack treatment on concrete surfaces
- ▶ Tack-free in one hour or less

Mataspan: closed and open cell foam joint seals

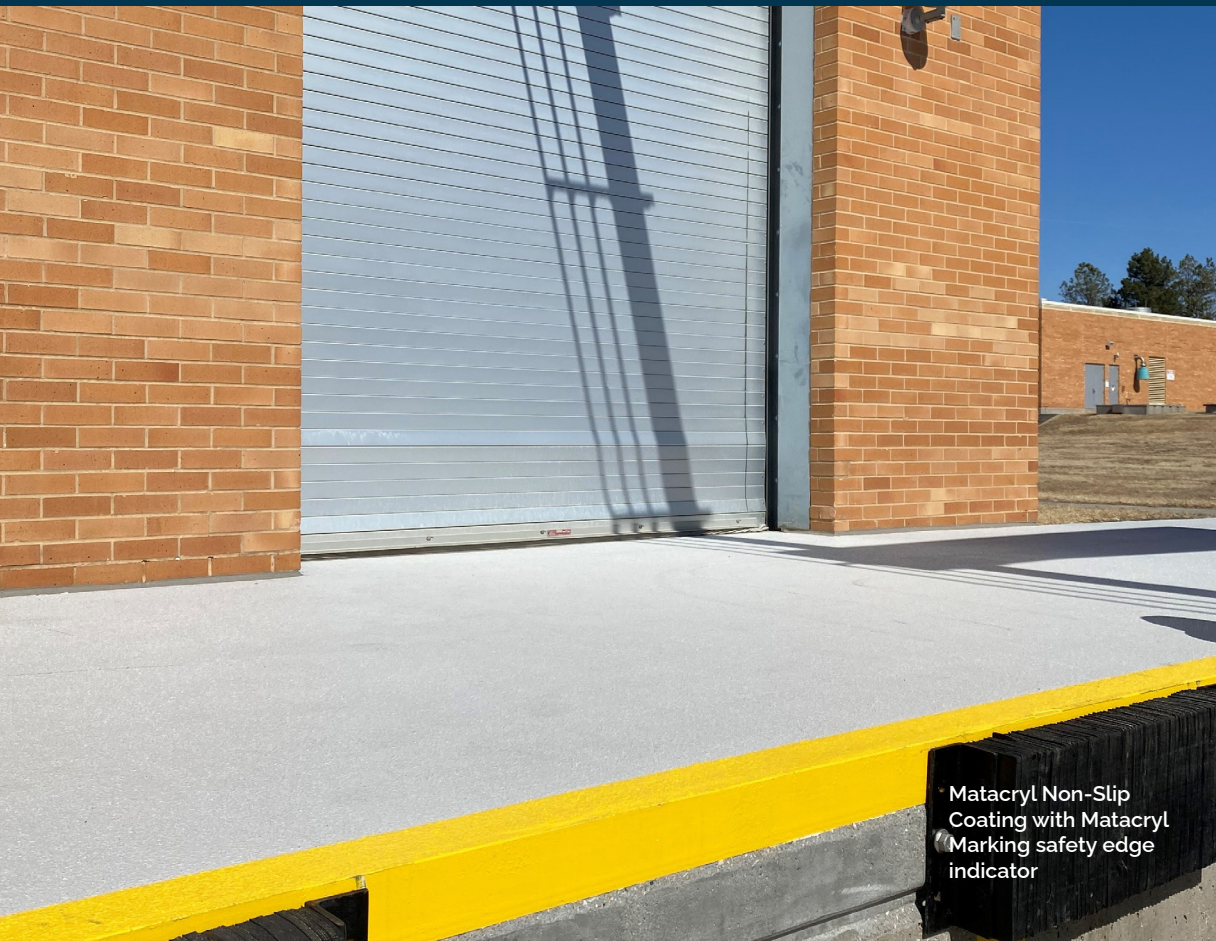
Seals joints in floors, walls, decks and dock structures

- ▶ Monolithic foam with no unbonded laminations to prevent delamination and object intrusion
- ▶ Allows for movement up to 100% (+/- 50%) of mean joint size
- ▶ Provides a watertight, dust proof, airtight, UV-stable, chemical-resistant, soundproof, and insulated seal
- ▶ Full deck surface solution when coupled with Matacryn coating and waterproofing systems



Mataspan open cell foam
expansion joint

FPT Infrastructure supports, fills, coats, reinforces, seals, protects, and restores the vital infrastructure that supplies, moves and connects us.



Matacryn Non-Slip
Coating with Matacryn
Marking safety edge
indicator



Bridge &
Highway



Rail &
Transit



Aviation



Underground
Construction



Utility



Facility
Maintenance



Home Office

401 Old US 52 South
Mount Airy, NC 27030
p. 336-789-7259

info@fptinfrastructure.com
www.fptinfrastructure.com

